



# SITE SETUP GUIDE

## PREPARING YOUR HOME



**BUILT THE NZ WAY | PEOPLE-FIRST**

# Overview

## Timeline



Right after the cabin gets approved, start thinking about what needs sorting ahead of arrival.

Tackle each item soon - this way, nothing slows down Drew when it comes time to set things up.

Delivery goes easier when prep work finishes first. A day usually unfolds like this.

### After signing your contract

- Confirm site location on property
- Start council reviews when needed
- Decide on foundation type
- Start wastewater planning
- Confirm access route

### 6-8 weeks before delivery

- Finalise wastewater approvals
- Book contractors (groundworks, power, plumbing)
- Prepare site access
- Confirm foundation plan

### Two or three weeks prior to arrival

- Complete ground preparation
- Install foundations
- Confirm power plan
- Confirm water plan
- Send site photos to Freedom Cabins

### One week until the package arrives

- Final access check
- Clear obstacles
- Confirm readiness using checklist
- Email sent to confirm details with Freedom Cabins

Should a delay pop up, speak soon - that way, shifts in schedule might still be manageable.



freedomcabinsnz.com

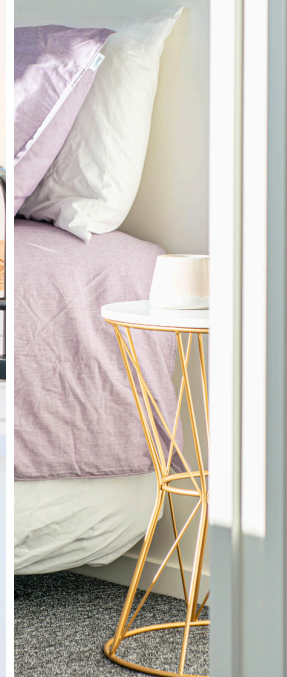
Galaxy S24

# Ground *Preparation*

A flat surface helps keep things steady once it arrives. Ground that won't shift matters just as much. Water should move away easily after rain.

## What "good enough" looks like

- Firm, compacted ground
- Half a centimeter is all it varies over the entire area
- Firm throughout, never yielding to mushy spots
- Suddenly, water flows off the land. Away it moves, pulled by slope. Following gravity, it slips down. Off-site it travels, leaving dry ground behind
- Clear of debris and vegetation



## What causes problems

- Uneven ground
- Soft soil
- Wet/muddy access
- Recently filled ground not compacted
- Poor drainage
- Sloping sites not prepared properly

## Soil considerations

- Clay: may need extra drainage
- Sand: may need compaction
- Fill: must be compacted
- Built on a hill? That kind of ground often asks for walls that hold soil back. Sometimes, deeper supports go in instead. Each spot decides what fits. Not every slope works the same way. Hidden strength matters under uneven floors

Pictures help when things aren't clear - we'll take a look without hesitation.



# Access

## *Requirements*

A crane sets your cabin down after it gets there by truck. Trouble getting to the spot often slows things up. Access problems show up a lot when projects stall.

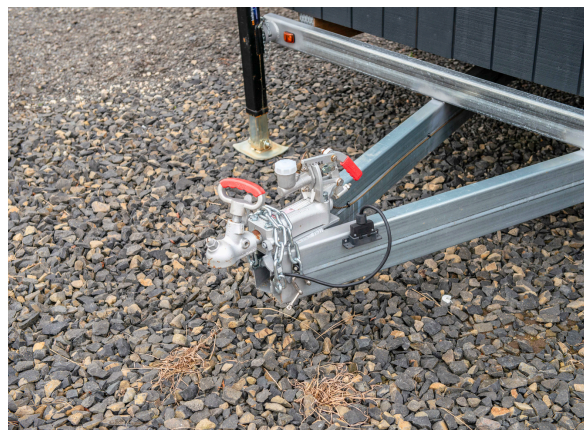
### Minimum requirements

- Gate width: 3m minimum
- Access width: 3.5m clear
- Height clearance: 4.5m
- Turning space for truck
- Firm driveway/track
- Bent close to the ground, limbs stay clear. Wires hang nowhere near. Tangled obstructions? Absent here. Space opens up below. Nothing snags your path forward

### Check for

- |  |  |
|--|--|
| <input checked="" type="checkbox"/> OVERHEAD POWER LINES | <input checked="" type="checkbox"/> SEPTIC LIDS OR TANKS |
| <input checked="" type="checkbox"/> TREES AND BRANCHES   | <input checked="" type="checkbox"/> SOFT GROUND          |
| <input checked="" type="checkbox"/> TIGHT CORNERS        | <input checked="" type="checkbox"/> FENCES               |

Pictures and numbers sent ahead of time help when space is limited.



# Foundation *Options*

A solid foundation keeps your cabin steady. What works best changes with where you place it.

## 1. Piles made of wood stand one way. Steel versions hold things up another. Each works where it fits best

Most common option.

### Best for:

- Slight slopes
- Uneven ground
- Rural sites

## 2. Concrete pads

### Good for:

- Flat sites
- Permanent placement
- High-load areas

## 3. Ground screws

### Best for:

- Quick install
- Minimal excavation
- Some sloping sites



## What we recommend

Depending on your building pictures and layout drawings, we'll offer guidance. While you share visuals of the space, suggestions will follow. As soon as images arrive, direction comes through.

With floor plans in hand, feedback takes shape. Once photographs are seen, advice forms around them.

Before the delivery date arrives, foundations need securing - unless different plans are already set. Arrangements made ahead can change that timing.

# Power *Connection*

## Temporary power (delivery day)

### Needed for:

- Tools
- Setup
- Final checks

### Usually supplied by:

- Existing house
- Generator
- Temporary builder supply



## Permanent connection

### Customer arranges:

- Electrician
- Approval by council, when needed
- Meter board connection

Get in touch first so we know what you're doing. That way things go smoothly when it's time to hand over.

# WATER

## Connection

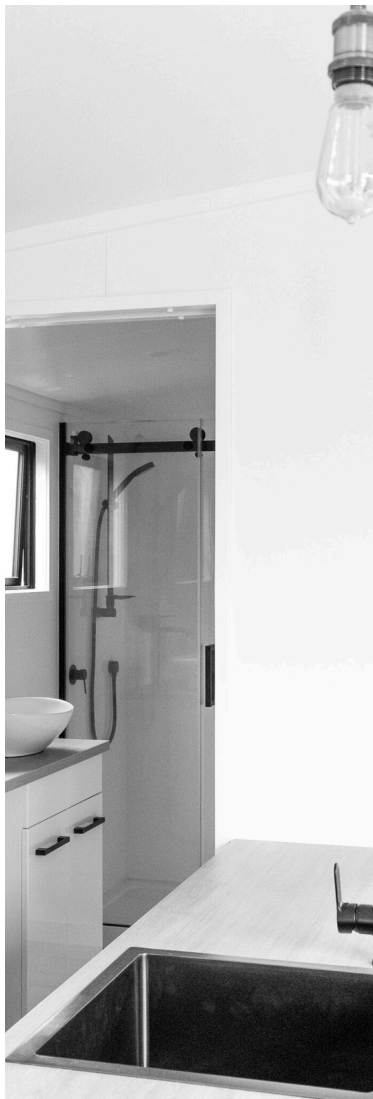
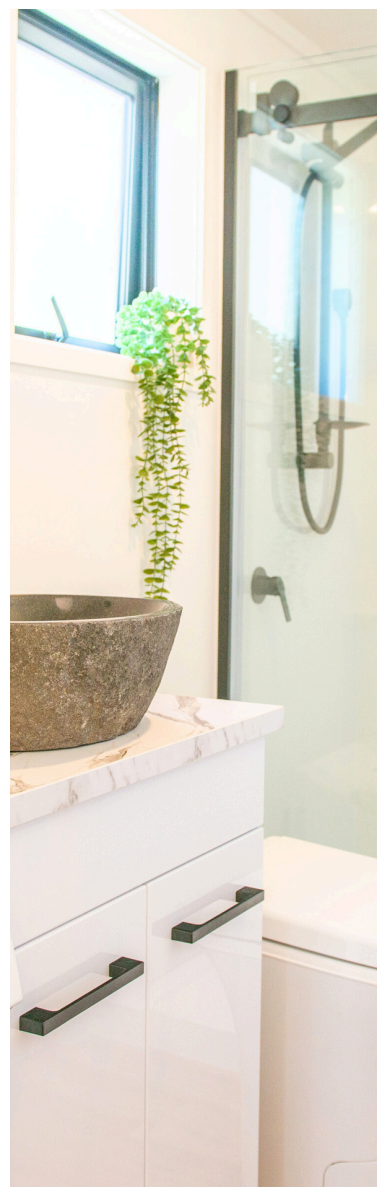
### Mains connection

- Confirm connection point
- Trenching completed
- Plumber booked

### Tank supply

- Filled up after putting the tank in place
- Pump connected
- Pipe run ready

Fresh water line must be prepared - hookup possible at drop-off or just later. Ready access needed when truck arrives, maybe a day after.



## WASTEWATER

Failing checks means it won't move forward. Approval comes first, then scheduling follows close behind.

Check out the other guide we made just for this

**“Wastewater Made Simple: Understanding Your Options.”**

Starting late? That often causes holdups. Reach out sooner rather than later - it helps avoid waiting.

# Pre-delivery Checklist

This checks if you're set.

Might want to send it by email along with pictures of the location.

## Site

Last check showed the spot is set

- Ground level and compact
- Drainage sorted
- Foundations installed

## Access

- Gate width min 3m
- Clear access path
- Overhead Clearance Confirmed
- Space opening up right now
- No obstacles

## Services

- Power settings are set
- Water ready
  - Wastewater approved
  - Contractors booked

## Final checks

Site photos shared with Freedom Cabins

Last check shows arrival is set for Friday.  
Expect it then

A name is listed where help can be found  
during visits. Someone waits there when  
needed

- Pets secured
- Gates unlocked



**Customer name:**

**Site address:**

**Delivery date:**

Once you finish, slide the checklist  
along with pictures over to:  
[info@freedomcabinsnz.com](mailto:info@freedomcabinsnz.com)



[freedomcabinsnz.com](http://freedomcabinsnz.com)

# What Our

## *Customers Say*



100% recommend Freedom Cabins for your cabin rental needs. Drew, Jodie and the crew were always efficient and great communicators.

**Always met our needs without hesitation.**

— *Talie Burt*



The cabin is very nice spacious and nice carpet. The guy who delivered my cabin was very nice and helpful to decide where to put the cabin. But over all lovely team to work with took me less than 24 hours to do the paperwork and get my cabin delivered.

**Best service**

— *Raewyn Solomon*



# Common Delays *To Avoid*

- Site not level
- Access blocked
- Wastewater not approved
- Foundations incomplete
- Contractors not booked
- Last-minute changes

Mistakes avoided today mean fewer fixes down the road.

## FINAL NOTE

Fresh boxes arrive without fuss. Each stop feels calm, never rushed. Smooth moves keep things light.

Ahead of time, getting ready changes everything. What matters shows up when you plan early.

Got a question? Snap a picture. That way, we can see what you mean. Seeing helps clear things up quick.

Starting fresh can go smoothly when support shows up early. Right from the start, getting it correct feels possible.



## Freedom Cabins

📞 027 711 8710

✉️ [info@freedomcabinsnz.com](mailto:info@freedomcabinsnz.com)

🌐 [freedomcabinsnz.com](http://freedomcabinsnz.com)

